

WI IRRIGATION WATER METER

MODEL: WI-50E-300E



The WI irrigation water meter has been designed for irrigation and other applications where standard woltman type meters cannot be used because the water contains large solids. WI meters feature an especially large water passageway that is intended to allow large solids to pass through the meter. Although designed with irrigation use specifically in mind these meters also find use in process applications where waste water contains a high solid content such as in some food processing plants. The availability of versions with an electrical

output allows the use of remote display and monitoring equipment.

Features and Benefits

- Paddle wheel design resists blockage and damage to meter from solids in water.
- High tolerance to water containing solids due to the open design.
- Negligible loss of head.
- Wide flow range accuracy.
- Suitable for irrigation and waste water applications.
- Evacuated and sealed dry dial counter ensures clear reading.
- Field replaceable insert, one insert covers full range of sizes.
- Magnetic coupling between paddle wheel and counter.
- Bearings are constantly flushed during operation to eliminate deposit of solids.
- Pulse output models available (WIY series)
- Suitable for installation in any orientation
- Steel cover with padlock facility to protect the counter.
- Flanges can be drilled for BS, ISO or ASA flanges.

TECHNICAL SPECIFICATIONS:

Maximum Working Pressure: 16 Bar

Body: Polyester coated cast iron body

Flange Drilling: As per standard or customer requirements

Maximum Working Temperature: 50° C (cold water), 90° C (hot water)

Pulse Available: DN50~DN125: 0.01/0.1/1 m³/pulse; DN150~DN300: 0.1/1/10m³/pulse

GOLDLAND WATER PROJECT EQUIPMENT CO., LTD.

Address: No.8 Chenghu road Pingnan Guangxi China.

Tel: +86-775-7838101 Fax: +86-775-7838121 Postal code: 537300

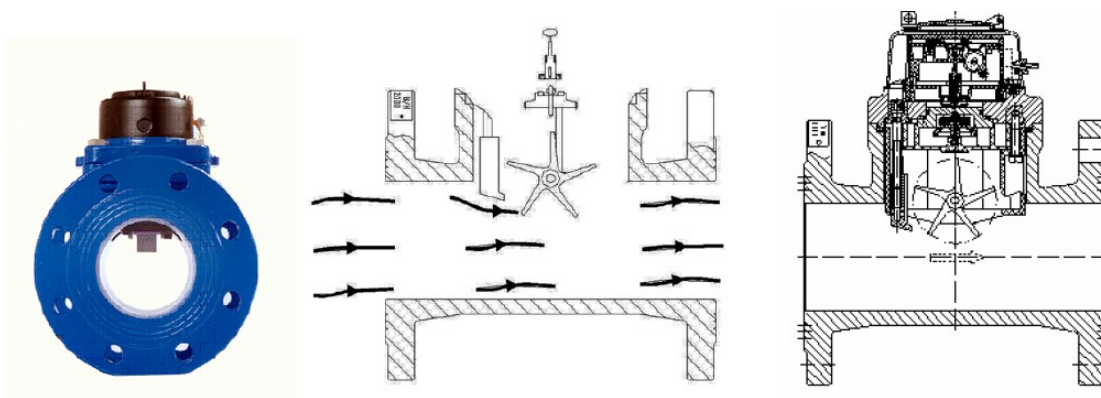
Web: <http://www.watermeter.hk> Email: info2@watermeter.hk

INSTALLATION REQUIREMENTS:

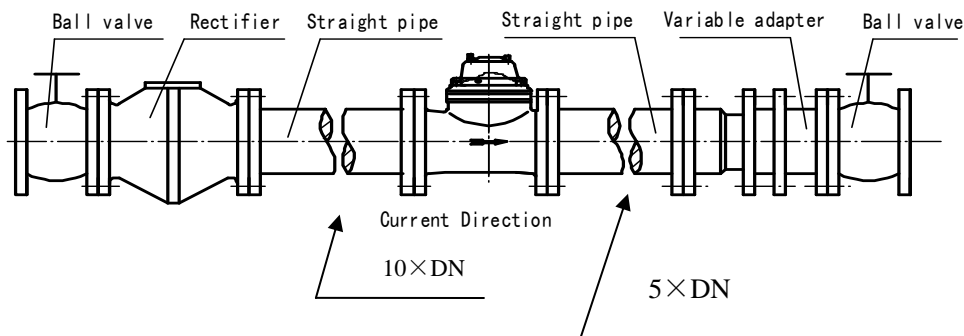
- The meter can be installed in any position (horizontal, vertical or inclined)
- The meter must be always full of water while operating.
- Prior to the installation of a new meter, the pipeline must be flushed out.

INSTALLATION REQUIREMENTS:

- The meter can be installed in any position (horizontal, vertical or inclined)
- The meter must be always full of water while operating.
- Prior to the installation of a new meter, the pipeline must be flushed out.


Installation Instruction-----Bulk water meter

- Location for water meter must be accessible both for installation job and reading and far away from fog and humidity.
- This type water meter is horizontally installed only; verticality or slant installation is rejected. The arrow branded in the meter body must target in the same direction with the pipeline flow.
- A segment of straight pipe which lengthens at least 10xDN is required to set upstream the meter, another segment lengthens 5xDN downstream.
- Never protrude gasket of flange into inner pipe and never make it misalign with the flange.
- Thoroughly flush remainder/debris in the pipe before connecting water meter with pipeline.
- After installation the pipeline should be filled with water slowly to prevent from abrupt surge or air bubble which may destroy the meter or affect accuracy.
- The indicated QN & pressure , maximum temperature 100°C for hot water meter, 50°C for cold water meter, can not be exceeded.


GOLDLAND WATER PROJECT EQUIPMENT CO., LTD.

Address: No.8 Chenghu road Pingnan Guangxi China.

Tel: +86-775-7838101 Fax: +86-775-7838121 Postal code: 537300

Web: <http://www.watermeter.hk> Email: info2@watermeter.hk

TECHNICAL SPECIFICATIONS:
Main Technical Data

Type	Size (mm)	Class	q _s	q _p	q _t	q _{min}	Min. Reading	Max. Reading
			Max. Flow	Nominal Flow	Transitional Flow	Min. Flow	m ³	
			m ³ /h				m ³	
WI-50E	50	A	30	15	4.5	1.2	0.0002	999,999
WI-65E	65	A	50	25	7.5	2.0	0.002	999,999
WI-80E	80	A	80	40	12	3.2	0.002	999,999
WI-100E	100	A	120	60	18	4.8	0.002	999,999
WI-125E	125	A	200	100	30	8	0.002	999,999
WI-150E	150	A	300	150	45	12	0.002	999,999
WI-200E	200	A	500	250	75	20	0.002	999,999
WI-250E	250	A	800	400	120	32	0.02	9,999,999
WI-300E	300	A	1200	600	180	48	0.02	9,999,999

Dimensions and weight

Type	Size	L Length	H Height	Connecting flange			Weight (kg)
				φD1 Outside diameter	φD2 Bolt circle diameter	Connecting Bolts (n-M)	
				mm			
WI-50E	50	200	253	165	125	4-M16	11
WI-65E	65	200	268	185	145	4-M16	13
WI-80E	80	225	284	200	160	8-M16	14
WI-100E	100	250	295	220	180	8-M16	16
WI-125E	125	250	310	250	210	8-M16	23
WI-150E	150	300	339	285	240	8-M20	28
WI-200E	200	350	382	340	295	8-M20(1.0MPa)	45
						12-M20(1.6MPa)	
WI-250E	250	400	433	395	350	12-M20(1.0MPa)	62
		450	438	405	355	12-M24(1.6MPa)	
WI-300E	300	450	483	445	400	12-M20(1.0MPa)	82
		500	488	460	410	12-M24(1.6MPa)	

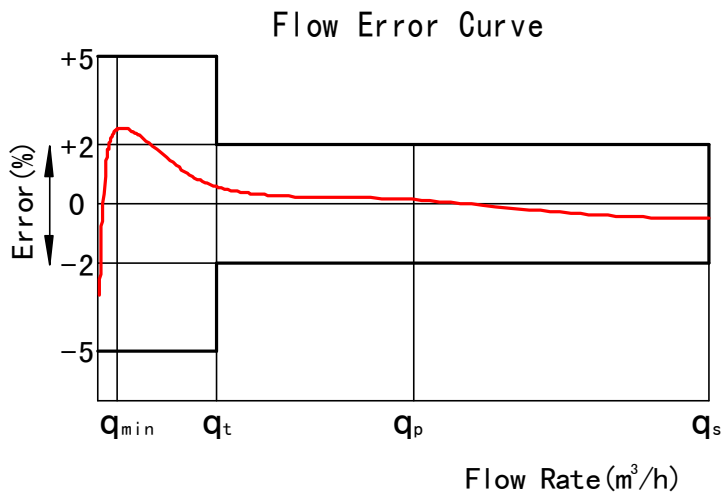
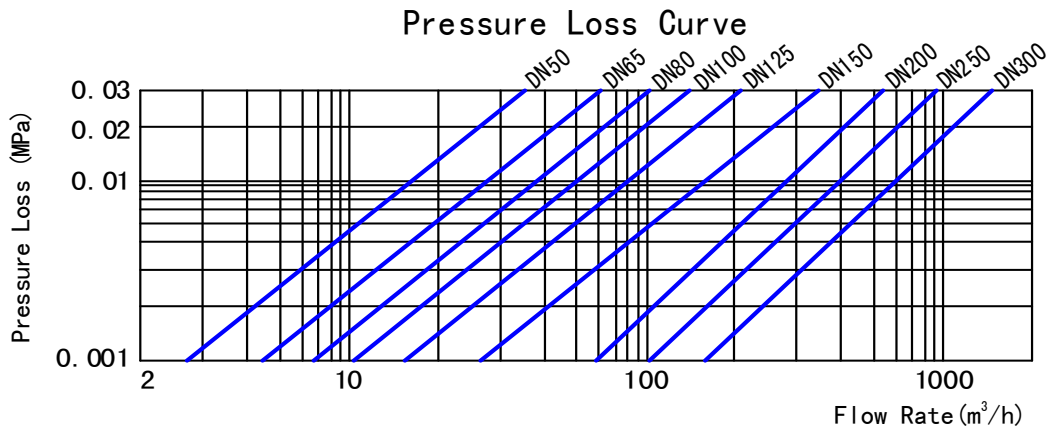
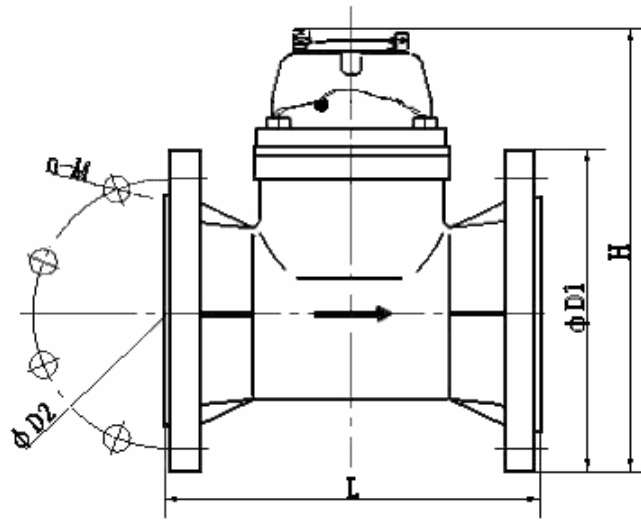
NOTE: The flange dimension conforms to ISO7005-2:1988 standard. Order for products of special requirements is also accepted.

GOLDLAND WATER PROJECT EQUIPMENT CO., LTD.

Address: No.8 Chenghu road Pingnan Guangxi China.

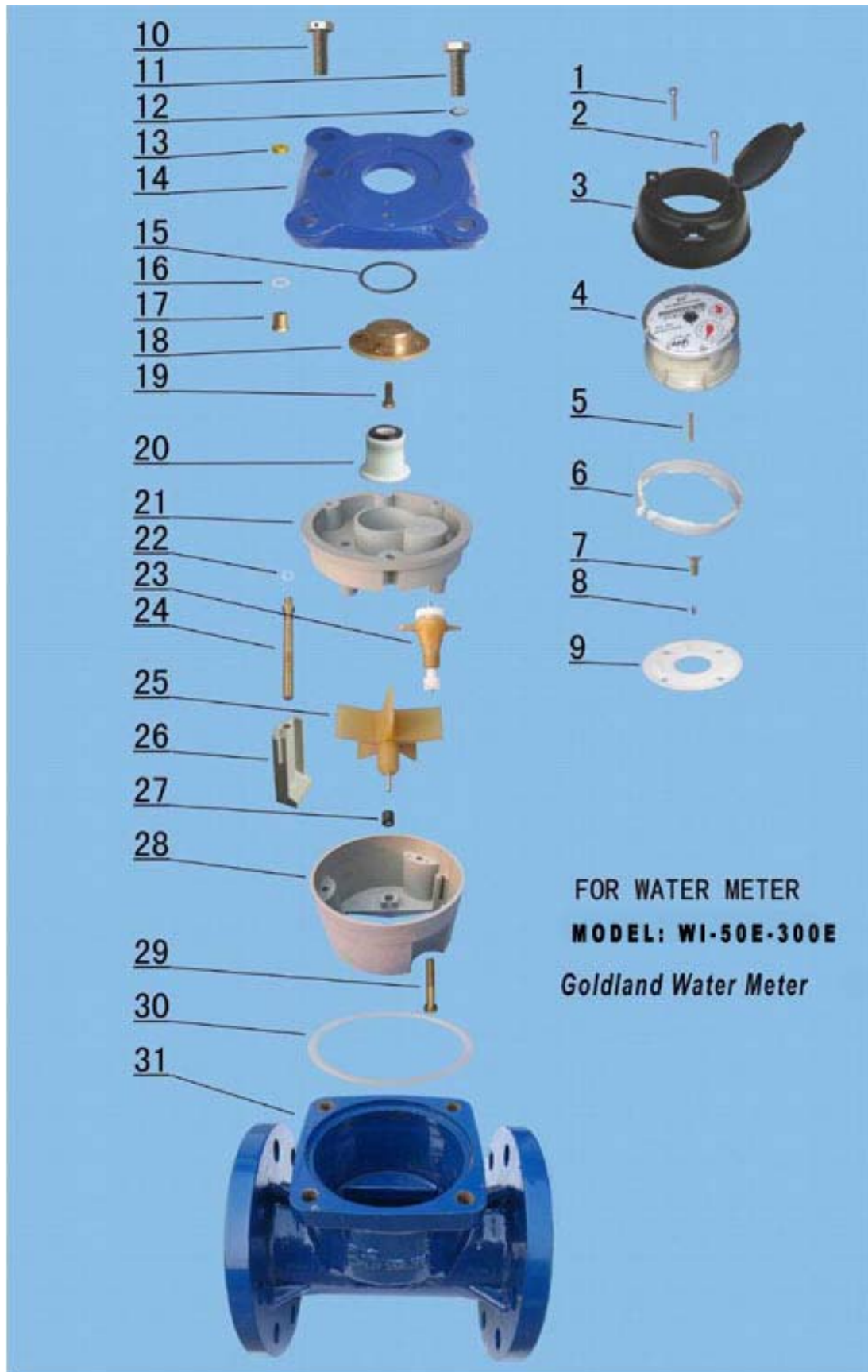
Tel: +86-775-7838101 Fax: +86-775-7838121 Postal code: 537300

Web: <http://www.watermeter.hk> Email: info2@watermeter.hk

DIMENSIONS

GOLDLAND WATER PROJECT EQUIPMENT CO., LTD.
Address: No.8 Chenghu road Pingnan Guangxi China.

Tel: +86-775-7838101 Fax: +86-775-7838121 Postal code: 537300

 Web: <http://www.watermeter.hk> Email: info2@watermeter.hk

EXPLODED VIEW

GOLDLAND WATER PROJECT EQUIPMENT CO., LTD.
Address: No.8 Chenghu road Pingnan Guangxi China.

Tel: +86-775-7838101 Fax: +86-775-7838121 Postal code: 537300

 Web: <http://www.watermeter.hk> Email: info2@watermeter.hk

WI Irrigation Water Meter

Code	Description	Material	QTY
1	Screw M5×45 For Sealing	Stainless Steel	1
2	Screw M5×45	Stainless Steel	1
3	Cover With Lid	Assembly	1
4	Sealed Register	Assembly	1
5	Fixing pin	Brass	1
6	Retainer Ring	ABS	1
7	Screw	Brass	4
8	Pin	Stainless Steel	1
9	Support	ABS	1
10	Bolt For Sealing	Stainless Steel	2
11	Bolt M12×35	Stainless Steel	2
12	Gasket	Stainless Steel	4
13	Adjusting Nut	Brass	1
14	Flange Plate	Cast Iron	1
15	O-ring	Silicon Rubber	1
16	O-ring	Silicon Rubber	1
17	Bush For Adjustment	Brass	1
18	Upper Bearing Plate	Brass	1
19	Screw	Brass	4
20	Lower Central Gear	Component	1
21	Cover Plate	MPPO	1
22	O-ring For Adjustment	Rubber	2
23	Transmission Gear Component	Assembly	1
24	Adjusting Lever	Brass	1
25	Turbine	Component	1
26	Adjusting Plate	MPPO	1
27	Bush with Agate	Nylon with Graphite	1
28	Measuring Chamber	MPPO	1
29	Fixing Screw	Brass	3
30	O-ring	Rubber	1
31	Body	Cast Iron	1

GOLDLAND WATER PROJECT EQUIPMENT CO., LTD.

Address: No.8 Chenghu road Pingnan Guangxi China.

Tel: +86-775-7838101 Fax: +86-775-7838121 Postal code: 537300

Web: <http://www.watermeter.hk> Email: info2@watermeter.hk