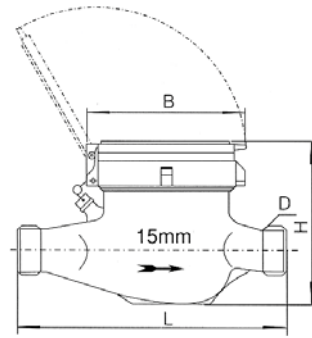
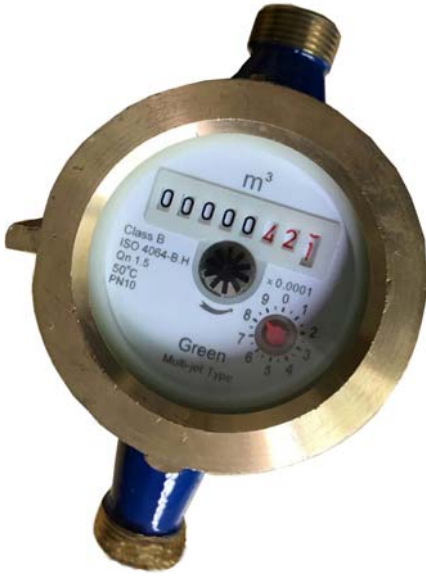


MULTI-JET DRY DIAL VANE WHEEL WATER METER WITH SINGLE POINTER
MODEL: LXSC-15E



◆ Measuring the volume of cold (hot) water passing through the pipeline

FEATURES

- ◆ Dry type ,magnet drive, clean dial to guarantee it legible reading, resistance to magnetic interference.
- ◆ 8-digit roller, Available in hot water meter, The main technical data refer to cold potable water meter.
- ◆ High quality material applied to guarantee its function efficient and reliable.
- ◆ Available with non-return valve, inlet strainer and pulse output on request
- ◆ Technical data conform to International Standard

ISO4064 Class B or ISO4064-2005

WORKING CONDITION

- ◆ Water temperature:
 $\leq 40^{\circ}\text{C}$ for cold water meter
 $\leq 90^{\circ}\text{C}$ for hot water meter

MAXIMUM PERMISSIBLE ERROR

- $Q_{\min} \rightarrow Q_t (\text{ex } Q_t) = \pm 5\%$;
- $Q_t \rightarrow Q_s (\text{both included}) = \pm 2\%$ or $\pm 3\%$ (hot water);
- $Q_{\min} = \text{Min Flow}$, $Q_t = \text{Transition Flow}$, $Q_s = \text{Max Flow}$.

ACCESSORIES

one meter with 2 pcs tubes, 2 pcs nuts and 2 pcs gaskets for coupling.

MAIN TECHNICAL DATA

Type	Size (mm)	Class	q_s	q_p	q_t	q_{\min}	Min. Reading	Max. Reading
			Max. Flow	Nominal Flow	Transitional Flow	Min. Flow		
			m^3/h		L/h		m^3	
LXSC-15E	15	B	3	1.5	120	30	0.0001	99999

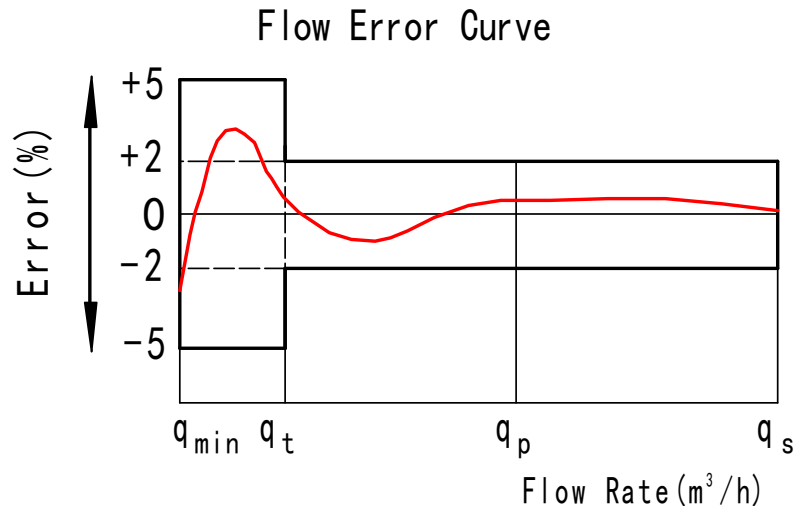
Note:

1. Both Class B and Class A is available. But Class B is popularly used.
2. Horizontally installation can reach accuracy of Class B. But if vertically installation reaches class A only.

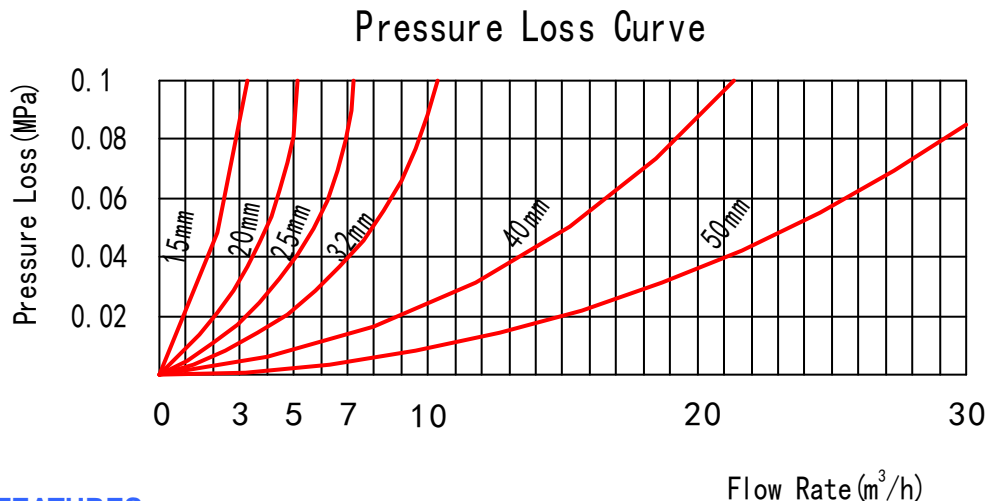
DIMENSIONS AND WEIGHT

Type	Size	Length	Width	Height	Connecting Thread D	Weight (kg)
	mm					
LXSC-15E	15	165	78	94	G 3/4B	1.1

FLOW ERROR CURVE



PRESSURE LOSS CURVE



APPLICATION AND FEATURES

- ◆ Applied for remote automatic reading system.
- ◆ Meter with pulse output: Available 1L, 10L, 100L or 1000L per pulse for choice.
- ◆ Water meter equipped with a Reed Switch Pulsar which can be connected to remote reading systems. The Reed Switch Pulsar emits signal to collector, a single signal means a certain quantity of water.
- ◆ Different option of water quantity per pulse is alternative and data refers to the mentioned table format below.

REED-SWITCH ELECTRIC DATA

Switch voltage: 24VAC/ DC

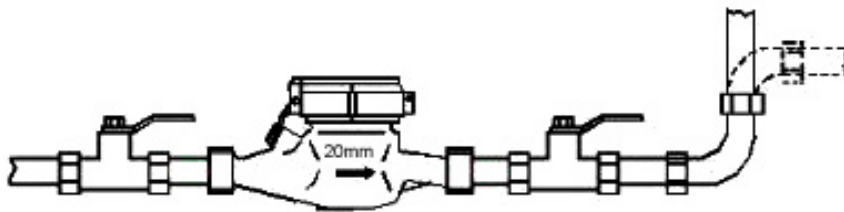
Switch current: 0.01A max

OUTPUT DATA:

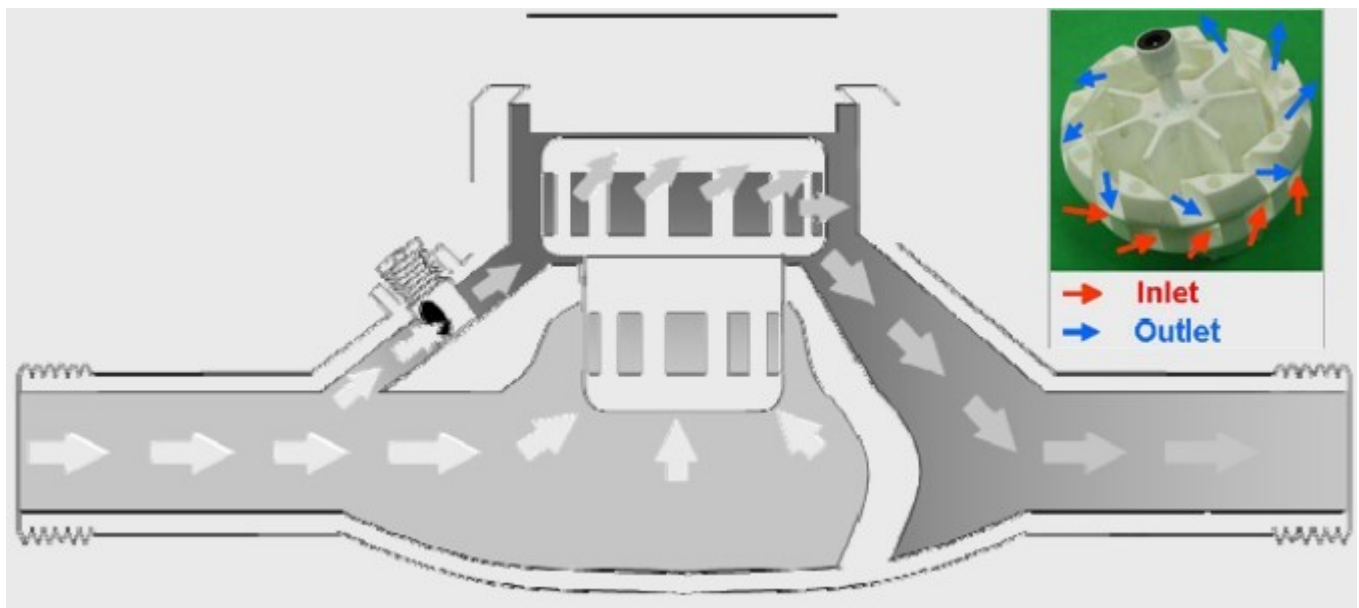
Size	Pulse output			
	1L/Pulse	10L/Pulse	100L/Pulse	1000L/Pulse
15mm	√	√	√	√

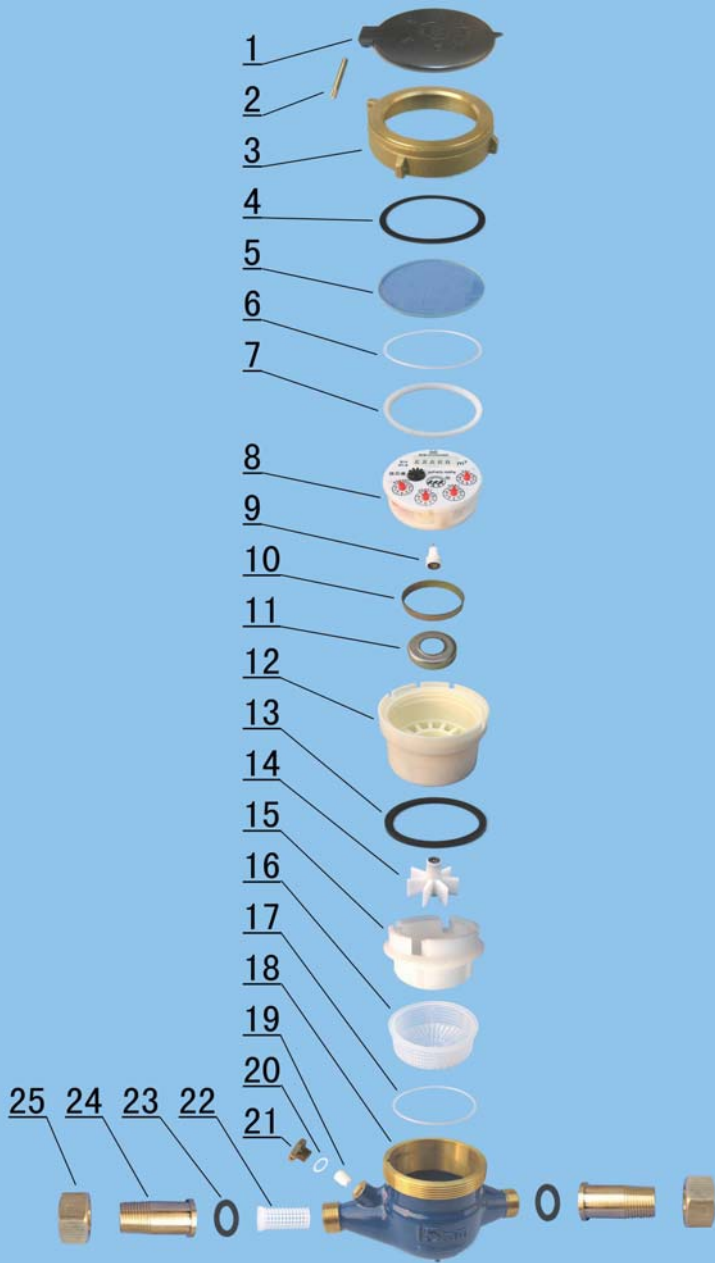
Installation Instruction-----domestic water meter

- Location for water meter must be accessible and far away from fog and humidity.
- This type water meter is horizontally installed only; verticality or slant installation is rejected. The arrow branded in the meter must correspond with the flow direction in the pipeline.
- Thoroughly flush remainder/debris in the pipe before connecting water meter with pipeline.
- For more accuracy the pipeline downstream the meter is recommended to elevate 500mm higher than the water meter level. (Illustrated below). perature 100°C for hot water meter, 50°C for cold water meter, can not be exceeded.



- If the meter services for a boiler, it is required to install a non-return valve at outlet of the meter.
- The indicated QN & pressure , maximum tem
- Cleanse the strainer once every 3 years or so. Meanwhile retest the meter before re-installation. Generally the job should be done by the water supply administration department.



EXPLODED VIEW


Code	Description	Material	QTY
1	Lid	HDPE	1
2	Hinge Pin	Brass	1
3	Cap	Brass	1
4	Sliding Gasket	PP	1
5	Glass	Tempered Glass	1
6	O-ring	Silicon Rubber	1
7	Register Fixing Ring	ABS Plastic	1
8	Register	Assembly	1
9	Central Gear	Component	1
10	Magnetic Shield Ring	Iron	1
11	Gearing box	ABS Plastic	1
12	Tightening Gasket	Rubber	1
13	Turbine Component	Component	1
14	Measuring Chamber	HIPS	1
15	Bottom Strainer	PP	1
16	Body	Brass	1
17	Coupling Nut	Brass	1
18	Coupling Tail Piece	Brass	2
19	Coupling Gasket	Rubber	2
20	Inlet Strainer	PP	2