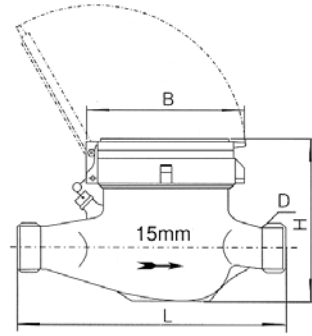


## MULTI-JET VANE WHEEL PLASTIC BODY COLD WATER METER

MODEL: LXSC-15E



◆ Measuring the volume of cold (hot) water passing through the pipeline

### FEATURES

- ◆ Available liquid sealed or Dry type
- ◆ Dry type ,magnet drive, clean dial to guarantee it legible reading, resistance to magnetic interference and digital wheels are sealed in the liquid-capsule and kept legible for reading..
- ◆ High quality material applied to guarantee its function efficient and reliable.
- ◆ Available with non-return valve, inlet strainer and pulse output on request.
- ◆ Available with ABS plastic body, PA66 plastic body.
- ◆ Technical data conform to International Standard.

ISO4064 Class C or ISO4064-2005R160.for liquid sealed

### WORKING CONDITION

- ◆ Water temperature:  
≤40°C for cold water meter

### MAXIMUM PERMISSIBLE ERROR

- Q<sub>min</sub>→Q<sub>t</sub>(ex Q<sub>t</sub>)=±5%;
- Q<sub>t</sub>→Q<sub>s</sub>(both included)=±2% or ±3%(hot water);
- Q<sub>min</sub>=Min Flow, Q<sub>t</sub>=Transition Flow, Q<sub>s</sub>= Max Flow.

### ACCESSORIES

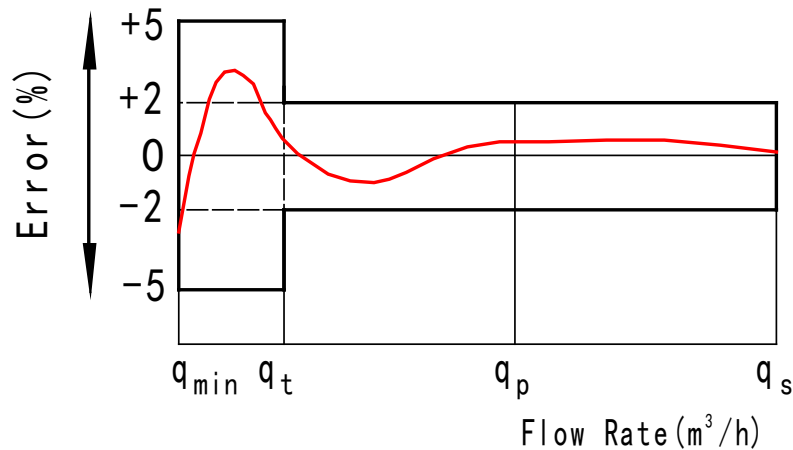
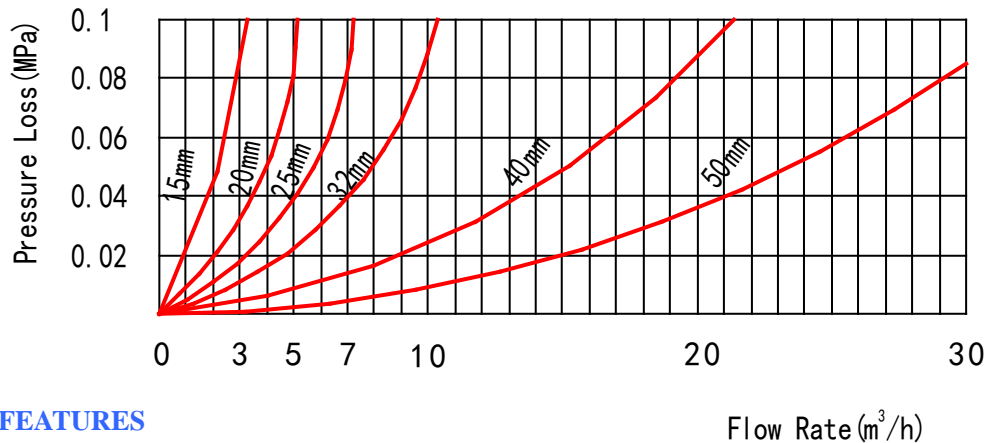
one meter with 2 pcs tubes, 2 pcs nuts and 2 pcs gaskets for coupling.

### MAIN TECHNICAL DATA

Type	Size (mm)	Class	q <sub>s</sub>	q <sub>p</sub>	q <sub>t</sub>	q <sub>min</sub>	Min. Reading	Max. Reading
			Max. Flow	Nominal Flow	Transitional Flow	Min. Flow		
			m <sup>3</sup> /h		L/h		m <sup>3</sup>	
LXSC-15E	15	B/C	3	1.5	120 /22.5	30/15	0.0001	99999

### DIMENSIONS AND WEIGHT

Type	Size	Length	Width	Height	Connecting Thread D	Weight (kg)
	mm					
LXSC-15E	15	115	99	115	G 3/4B	0.6

**FLOW ERROR CURVE**
**Flow Error Curve**

**PRESSURE LOSS CURVE**
**Pressure Loss Curve**

**APPLICATION AND FEATURES**

- ◆ Applied for remote automatic reading system.
- ◆ Meter with pulse output: Available 1L, 10L, 100L or 1000L per pulse for choice.
- ◆ Water meter equipped with a Reed Switch Pulser which can be connected to remote reading systems. The Reed Switch Pulser emits signal to collector, a single signal means a certain quantity of water.
- ◆ Different option of water quantity per pulse is alternative and data refers to the mentioned table format below.

**REED-SWITCH ELECTRIC DATA**

Switch voltage: 24VAC/ DC

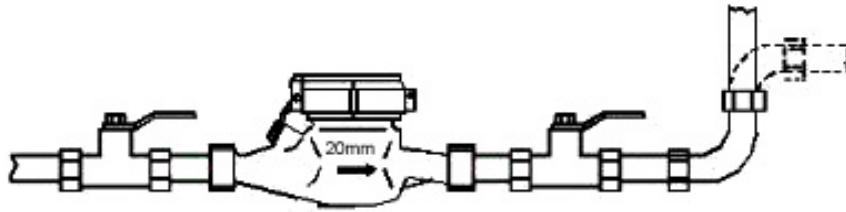
Switch current: 0.01A max

**OUTPUT DATA:**

Size	Pulse output			
	1L/Pulse	10L/Pulse	100L/Pulse	1000L/Pulse
15mm	√	√	√	√

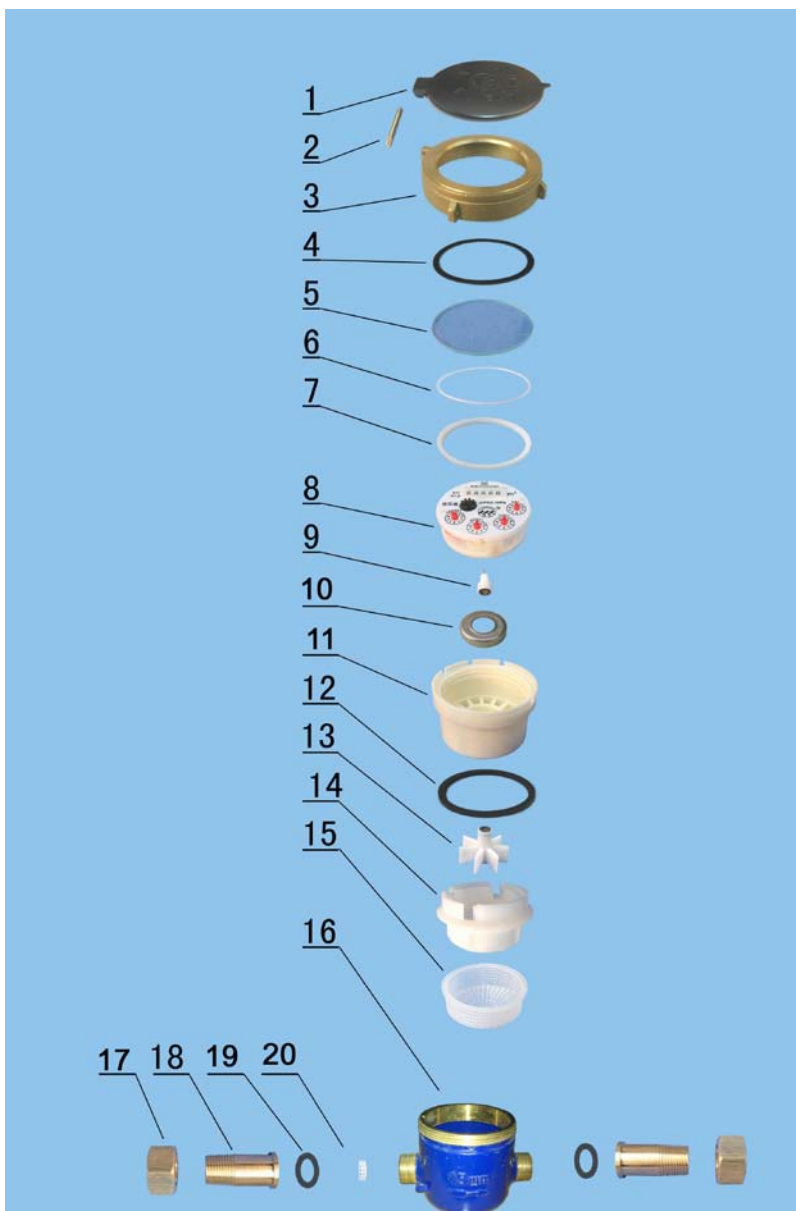
**Installation Instruction-----domestic water meter**

- Location for water meter must be accessible and far away from fog and humidity.
- This type water meter is horizontally installed only; verticality or slant installation is rejected. The arrow branded in the meter must correspond with the flow direction in the pipeline.
- Thoroughly flush remainder/debris in the pipe before connecting water meter with pipeline.
- For more accuracy the pipeline downstream the meter is recommended to elevate 500mm higher than the water meter level. (Illustrated below). perature 100°C for hot water meter, 50°C for cold water meter, can not be exceeded.



- If the meter services for a boiler, it is required to install a non-return valve at outlet of the meter.
- The indicated QN & pressure , maximum tem
- Cleanse the strainer once every 3 years or so. Meanwhile retest the meter before re-installation. Generally the job should be done by the water supply administration department.

### EXPLODED VIEW



Code	Description	Material	QTY
1	Lid	ABS	1
2	Hinge Pin	ABSorPA66	1
3	Cap	ABSorPA66	1
4	Sliding Gasket	PP	1
5	Glass	Tempered Glass	1
6	O-ring	Silicon Rubber	1
7	Register Fixing Ring	ABS Plastic	1
8	Register	Assembly	1
9	Central Gear	Component	1
10	Magnetic Shield Ring	Iron	1
11	Gearing box	ABS Plastic	1
12	Tightening Gasket	Rubber	1
13	Turbine Component	Component	1
14	Measuring Chamber	HIPS	1
15	Bottom Strainer	PP	1
16	Body	ABSorPA66	1
17	Coupling Nut	ABSorPA66	1
18	Coupling Tail Piece	ABSorPA66	2
19	Coupling Gasket	Rubber	2
20	Inlet Strainer	PP	2