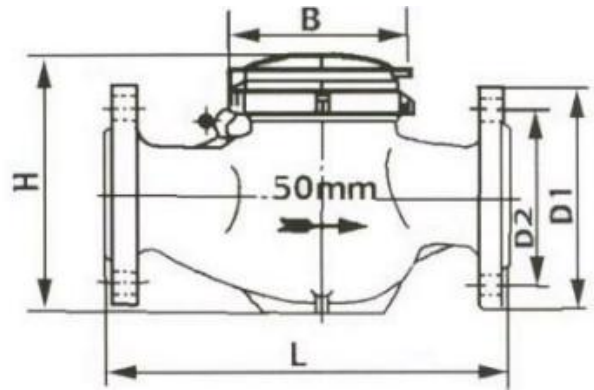


MULTI-JET DRY DIAL VANE WHEEL WATER METER
MODEL: LXSC-15E~50E


Measuring the volume of cold (hot) water passing through the pipeline

FEATURES

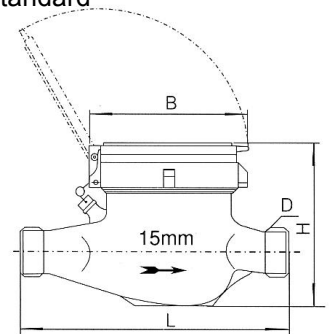
- ◆ Dry type ,magnet drive, clean dial to guarantee it legible reading, resistance to magnetic interference.
- ◆ High quality material applied to guarantee its function efficient and reliable.
- ◆ Available with non-return valve, inlet strainer and pulse output on request
- ◆ Technical data conform to International Standard ISO4064 Class B.
- ◆ Available with Brass body and Iron body.

WORKING CONDITION

- ◆ Water temperature:
 $\leq 40^{\circ}\text{C}$ for cold water meter
 $\leq 90^{\circ}\text{C}$ for hot water meter

MAXIMUM PERMISSIBLE ERROR

- $Q_{\min} \rightarrow Q_t (\text{ex } Q_t) = \pm 5\%$;
- $Q_t \rightarrow Q_s (\text{both included}) = \pm 2\%$ or $\pm 3\%$ (hot water);
- $Q_{\min} = \text{Min Flow}$, $Q_t = \text{Transition Flow}$, $Q_s = \text{Max Flow}$.


ACCESSORIES

one meter with 2 pcs tubes, 2 pcs nuts and 2 pcs gaskets for coupling.

MAIN TECHNICAL DATA

Type	Size (mm)	Class	q_s	q_p	q_t	q_{\min}	Min. Reading	Max. Reading
			Max. Flow	Nominal Flow	Transitional Flow	Min. Flow		
			m^3/h		L/h		m^3	
LXSC-15E	15	B	3	1.5	120	30	0.0001	99999
LXSC-20E	20	B	5	2.5	200	50	0.0001	99999
LXSC-25E	25	B	7	3.5	280	70	0.0001	99999
LXSC-32E	32	B	12	6.0	480	120	0.0001	99999
LXSC-40E	40	B	20	10	800	200	0.001	99999
LXSC-50E	50	B	30	15	1200	300	0.001	99999

Note:

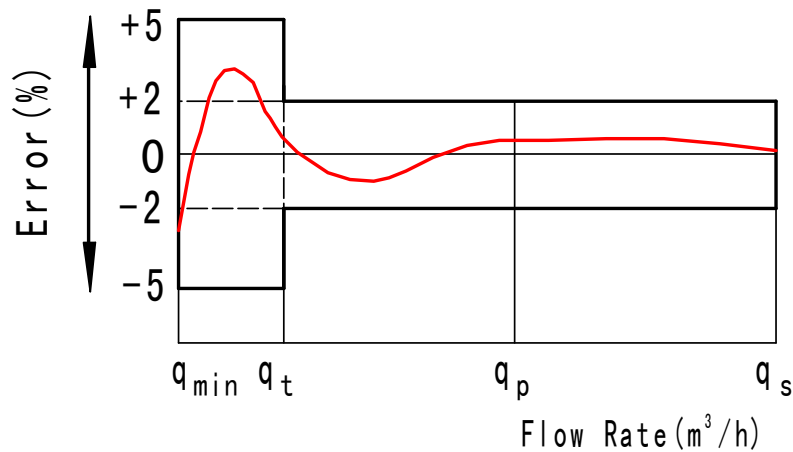
- 1.Both Class B and Class A is available. But Class B is popularly used.
- 2.Horizontally installation can reach accuracy of Class B.But if vertically installation reaches class A only.

DIMENSIONS AND WEIGHT

Type	Size	Length	Width	Height	Connecting Thread D	Weight (kg)
	mm					
LXSC-15E	15	165	99	104	G 3/4B	1.2
LXSC-20E	20	190	99	104	G 1B	1.7
LXSC-25E	25	225	104	115	G1 1/4B	2.6/2.2
LXSC-32E	32	230	104	115	G1 1/2B	2.6/2.5
LXSC-40E	40	245	124	153	G 2B	5.5/4.8
LXSG-50E	50	300	124	153	Iron body,Flange connect ISO 7005-2:1988 $\Phi d2=125$	8
		280				10

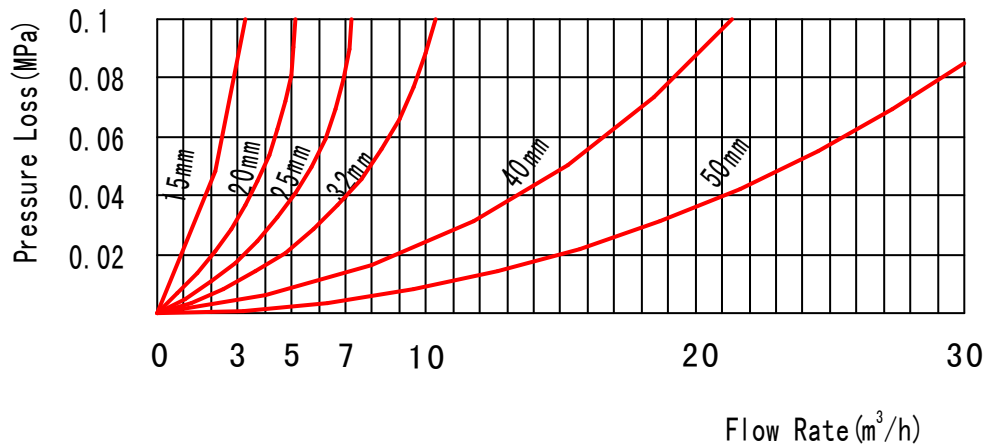
FLOW ERROR CURVE

Flow Error Curve



PRESSURE LOSS CURVE

Pressure Loss Curve



APPLICATION AND FEATURES

- ◆ Applied for remote automatic reading system.
- ◆ Meter with pulse output: Available 1L, 10L, 100L or 1000L per pulse for choice.
- ◆ Water meter equipped with a Reed Switch Pulsar which can be connected to remote reading systems. The Reed Switch Pulsar emits signal to collector, a single signal means a certain quantity of water.
- ◆ Different option of water quantity per pulse is alternative and data refers to the mentioned table format below.

REED-SWITCH ELECTRIC DATA

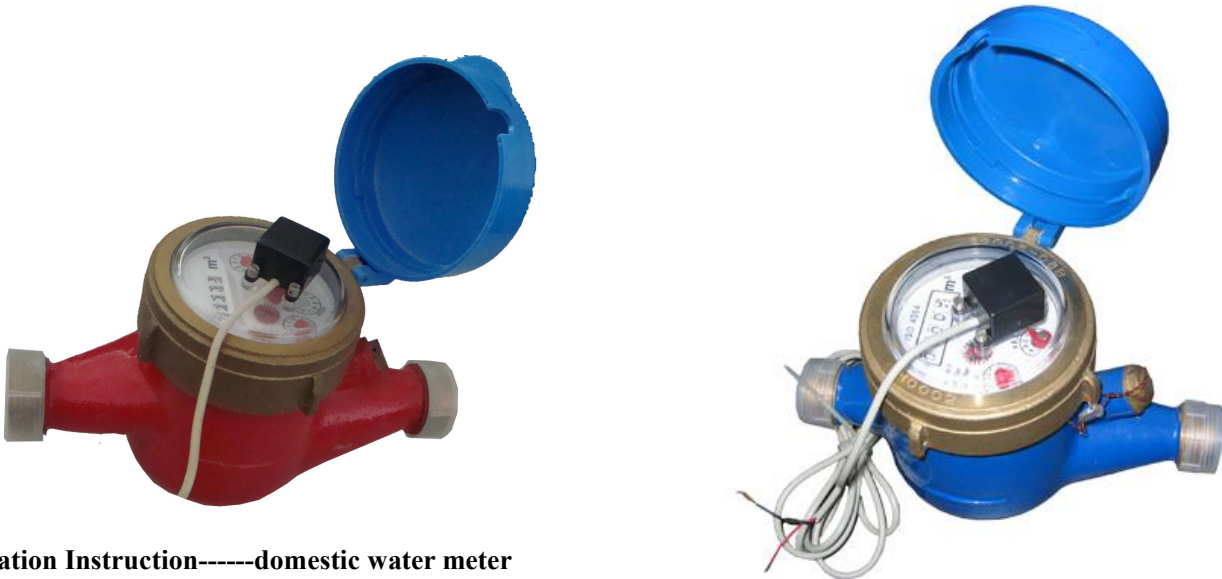
Switch voltage: 24VAC/ DC

Switch current: 0.01A max

OUTPUT DATA:

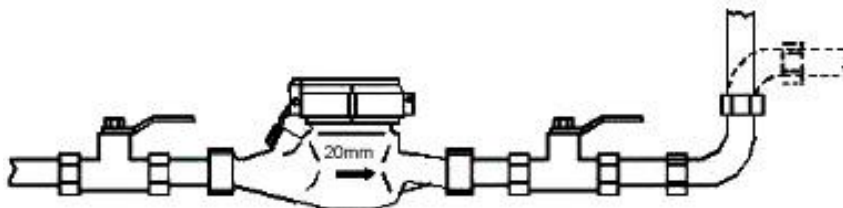
Size	Pulse output			
	1L/Pulse	10L/Pulse	100L/Pulse	1000L/Pulse
15mm	√	√	√	√
20mm	√	√	√	√
25mm	√	√	√	√
32mm	√	√	√	√
40mm	√	√	√	√
50mm	√	√	√	√

MODEL: LXSCY-15E~50E PULSE TRANSMITTING WATER METER (with reed – switch)



Installation Instruction-----domestic water meter

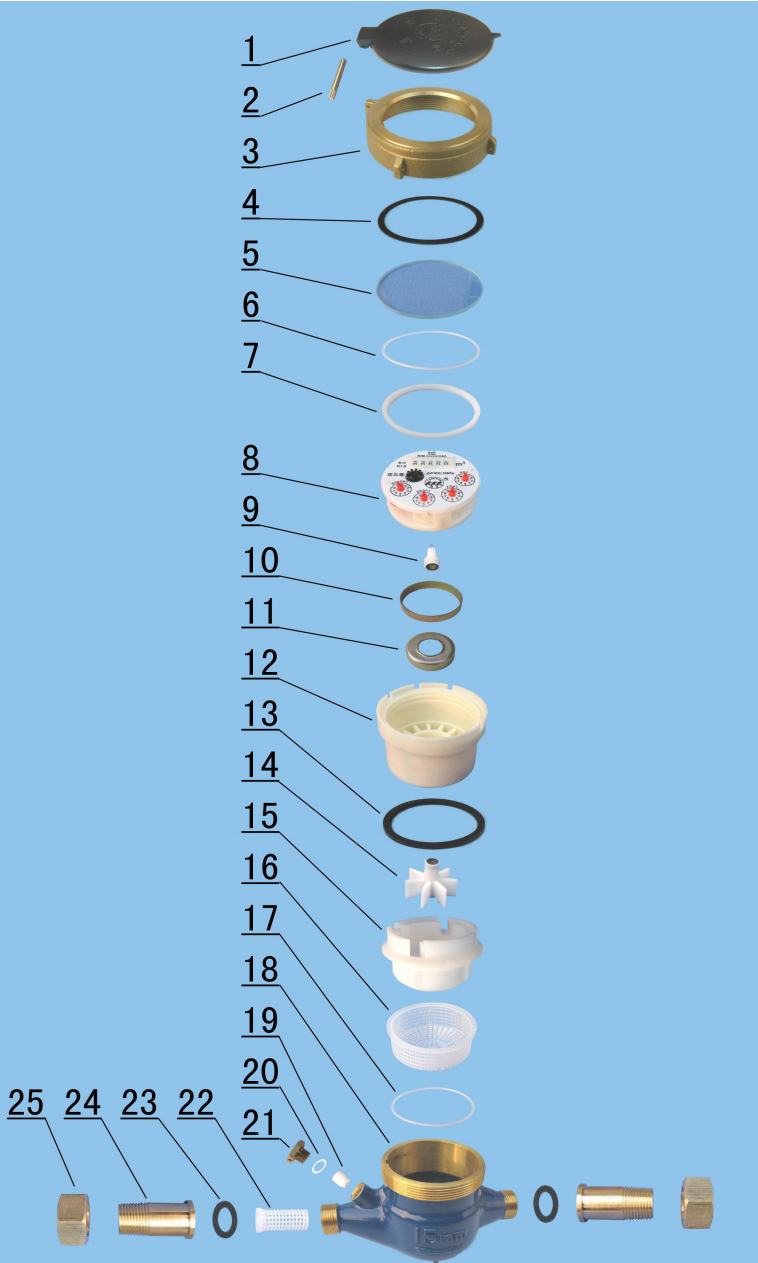
- Location for water meter must be accessible and far away from fog and humidity.
- This type water meter is horizontally installed only; verticality or slant installation is rejected. The arrow branded in the meter must correspond with the flow direction in the pipeline.
- Thoroughly flush remainder/debris in the pipe before connecting water meter with pipeline.
- For more accuracy the pipeline downstream the meter is recommended to elevate 500mm higher than the water meter level. (Illustrated below). perature 100°C for hot water meter, 50°C for cold water meter, can not be exceeded.



- If the meter services for a boiler, it is required to install a non-return valve at outlet of the meter.

- The indicated QN & pressure , maximum tem
- Cleanse the strainer once every 3 years or so. Meanwhile retest the meter before re-installation. Generally the job should be done by the water supply administration department.

EXPLODED VIEW



Code	Description	Material	QTY
1	Lid	ABS	1
2	Hinge Pin	Brass	1
3	Cap	Brass	1
4	Sliding Gasket	PP	1
5	Glass	Tempered Glass	1
6	O-ring	Silicon Rubber	1
7	Register Fixing Ring	ABS	1
8	Register	Assembly	1
9	Central Gear	Component	1
10	Magnetic Shield Ring	Iron	1
11	Magnetic Shield Ring	Iron	1
12	Gearing box	ABS Plastic	1
13	Tightening Gasket	Rubber	1
14	Turbine Component	Component	1
15	Measuring Chamber	ABS	1
16	Bottom Strainer	LDPE	1
17	Gasket	Silicon Rubber	1
18	Body	Brass	1
19	Adjusting Screw	POM	1
20	Adjusting Gasket	Nylon	1
21	Adjusting Plug	Brass	1
22	Inlet Strainer	PP	1
23	Coupling Gasket	Rubber	2
24	Coupling Tail Piece	Brass	2
25	Coupling Nut	Brass	2