

Combine-typed water meter
MODEL: LXF-80~150

A.application:

Measure the consumed water amount supplied from the water supplying system.

B.character:

model LXF water meter is called the byname of **Child-mother-relation** water meter which comprises a bulk diameter /woltmann/ removable type water meter and a small diameter/ multi-jet vane type water meter. The combined structure can assure the metrological accuracy even measuring the mini flow rate ,and is widely used for

the water supply system with wide fluctuating flow-rate,and is characterized by its wide measure-range,reasonable structure,accurate measurement and easy maintaince.

C.working condition:

temperature: 0.1℃~40℃

pressure: 1Mpa (1.6Mpa available)

D.flow error:

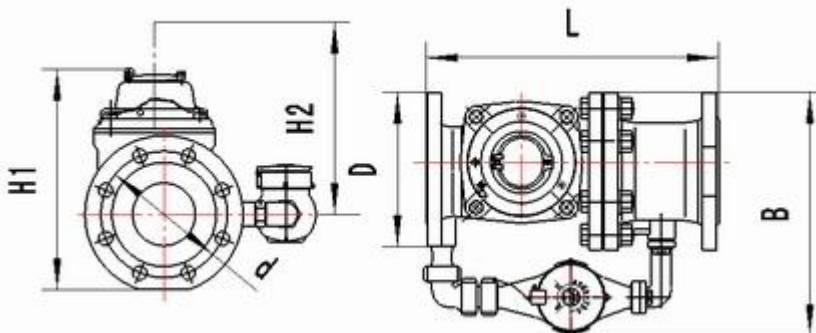
a) $q_{min} \rightarrow q_t = \pm 5\%$

b) $q_t \rightarrow q_s = \pm 2\%$

E.Figure dimension

DN Size	L Length	B Width	H1 Height	H2 Height	connecting flange		
					Outside Diameter D	Bolt Circle Diameter D1	Connecting Bolts
mm							
80	370	310	275	450	200	160	8-M16
100	370	320	285	450	220	180	8-M16
150	500	445	315	550	285	240	8-M20

(mark: H2 refers to the needed height for replacing the insert parts)


Goldland W.P.E.CO

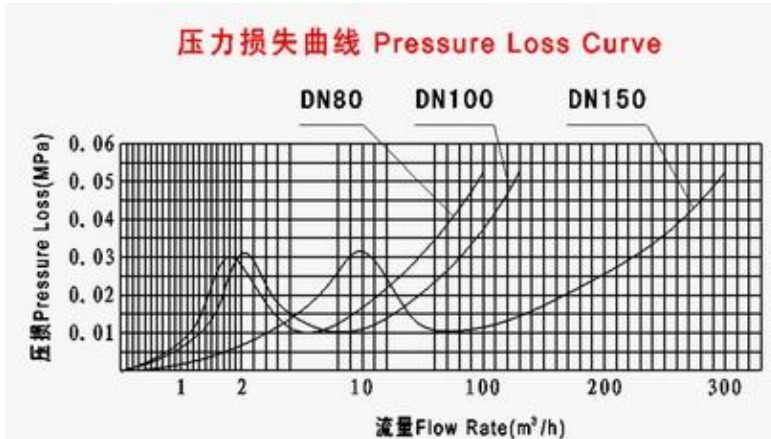
Address: No.8 Chenghu road Pingnan Guangxi China.

Tel: +86-775-7838101 Fax: +86-775-7838121 Postal code: 537300

Web: <http://www.watermeter.hk> Email: info@watermeter.hk

F. flow data

Size	q _s Overload Flow	q _p Permanent Flow	q _t Transitional Flow	q _{min} Min Flow	Min Reading	Max Reading
mm	m ³ /h				m ³	
80	80	40	0.20	0.05	0.00005	999,999 +99,999
100	120	60	0.20	0.05		
150	300	150	0.80	0.20		


Goldland W.P.E.CO
Address: No.8 Chenghu road Pingnan Guangxi China.

Tel: +86-775-7838101 Fax: +86-775-7838121 Postal code: 537300

 Web: <http://www.watermeter.hk> Email: info@watermeter.hk